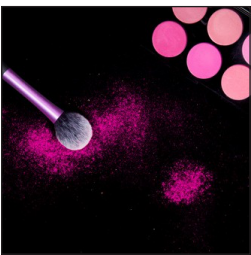
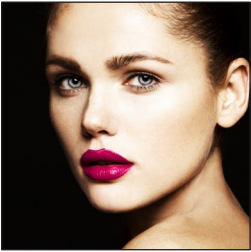


# ENTRY REQUIREMENTS

## SHB60221 Advanced Diploma of Skin Therapy



### Entry Requirements

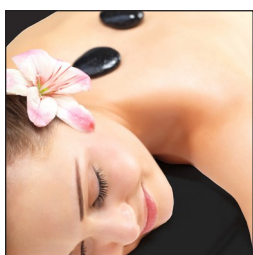
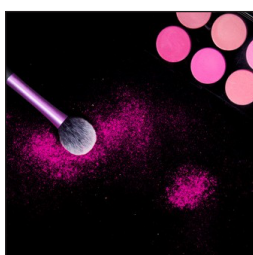
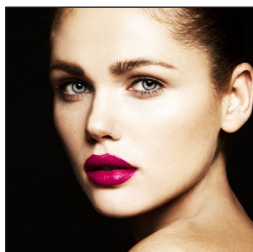
Entry to this qualification is open to individuals who have achieved all of the following units of competency:

- SHBBFAS005 Provide facial treatments and skin care recommendations OR SHBBFAS002 Provide facial treatments and skin care recommendations
- SHBBFAS006 Provide specialised facial treatments OR SHBBFAS003 Provide specialised facial treatments
- SHBBINF002 Maintain infection control standards OR HLTINF005 Maintain infection prevention for skin penetration treatments
- SHBBSSC001 Incorporate knowledge of skin structure and functions into beauty therapy
- SHBBSSC002 Incorporate knowledge of body structures and functions into beauty therapy
- Or who are able to demonstrate equivalent skills and knowledge to each of the above units of competency.
- It is highly recommended that students complete AABT5022 Advanced Laser IPL and Dermal Therapies as a preparatory course to provide essential skills and knowledge to succeed in this course.

### Academy specific Entry requirements

- All prospective students have a one-on-one interview with the Director of Enrolments prior to finalising enrolment application. This is to:
  - ensure the chosen course is appropriate for the student to undertake
  - identify the student's learning or other needs
  - ensure that the student understands their responsibilities
  - ensure that the student understands and agrees to abide by the Academy's policies and procedures
- A high standard of grooming and a caring nurturing personality are other requirements to being a successful laser and dermal therapist.
- Minimum age of 16 years
- Basic computer skills
- USI number is required

# ENTRY REQUIREMENTS



## Students to supply

- Notebook and stationery for class
- Laptop required for class
- Office 365
- Computer and internet required for research and theory assessments
- Own email address
- Uniform (cost \$165) – closed in flat black rubber soled shoes